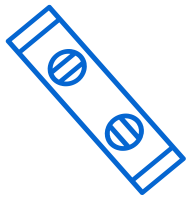


# FRAMELESS GLASS DOOR INSTALLATION GUIDE

This guide provides a step-by-step approach to installing a frameless glass door, covering various hardware applications and offering helpful tips for a successful installation.

## THE TOOLS YOU WILL NEED

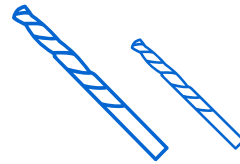
Below is a summary of the basic tools you'll need. In addition you'll find what tools to use for each product in the following step-by-step instructions. It is suggested to wear safety glasses when using power tools.



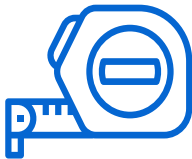
**LEVEL**



**ALLEN KEY**



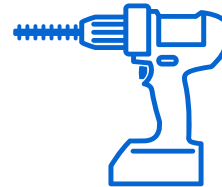
**1/8" AND 5/16"  
DRILL BITS**



**MEASURING  
TAPE**



**PENCIL**



**POWER DRILL**

## 8 DOOR INSTALLATION

### 3 types of installation:

8/A: Inline configuration (glass to glass)

8/B: Corner door configuration (wall/post to glass)

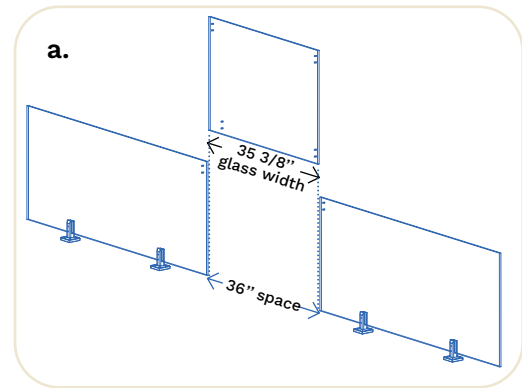
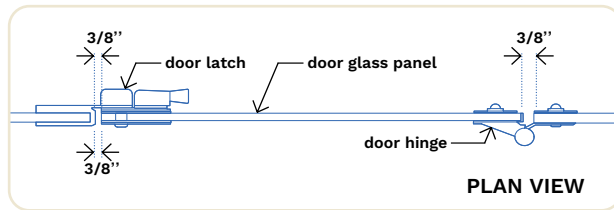
8/C: Corner door configuration (glass to glass)



The following door installation guide is based on the **surface-mounted spigot system** for illustration purposes only. The same concept and installation steps apply to all of our **frameless systems**, including the **adjustable base shoe**, **side-mounted spigot**, and **standoff systems**.

### 8/A INLINE CONFIGURATION (GLASS TO GLASS)

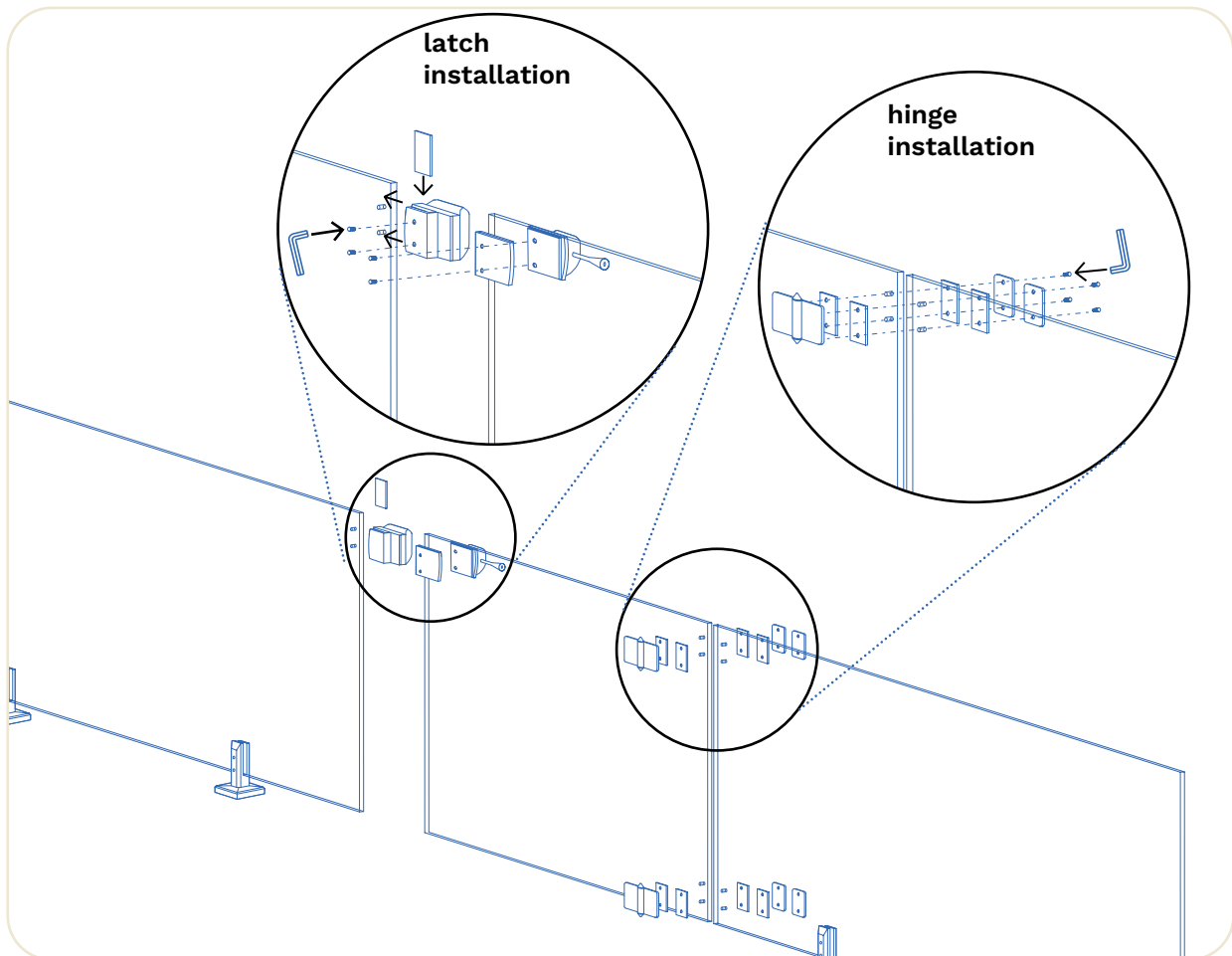
a. The dimension of the door opening should be 36".



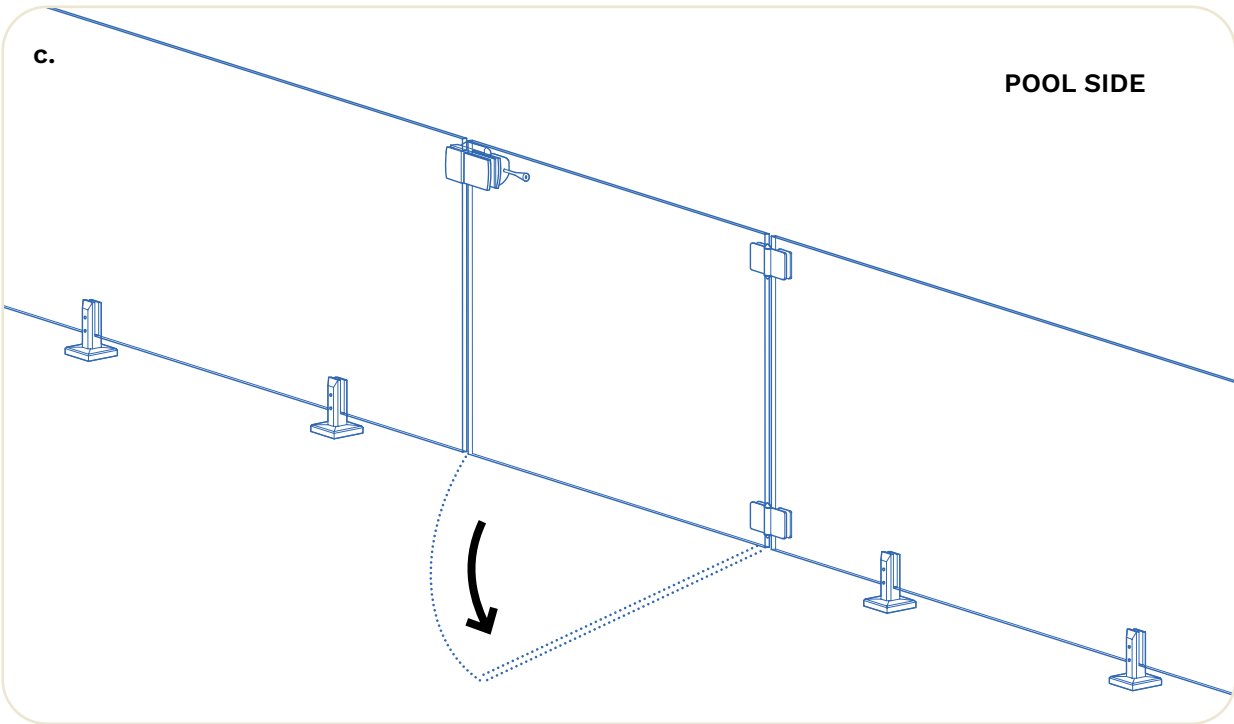
b. Install the two spring loaded door hinges and the magnetic door latch as illustrated below.



Tip: Adjust the door closing speed with the allen key adjustment screws located on the cylindrical part of the spring loaded hinges.

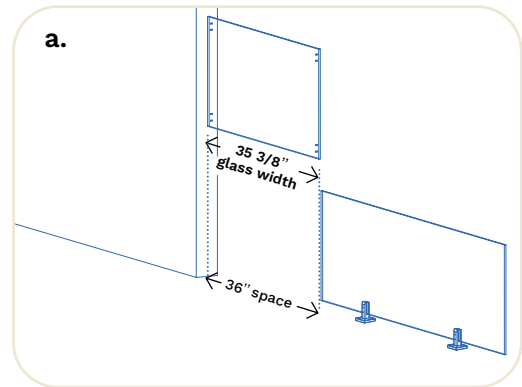
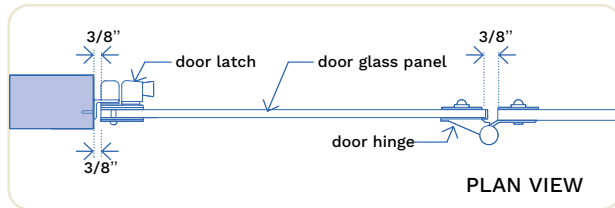


c. For Pool Railing, the door latch should be installed on the pool side of the gate. The door must swing outward, away from the swimming pool.




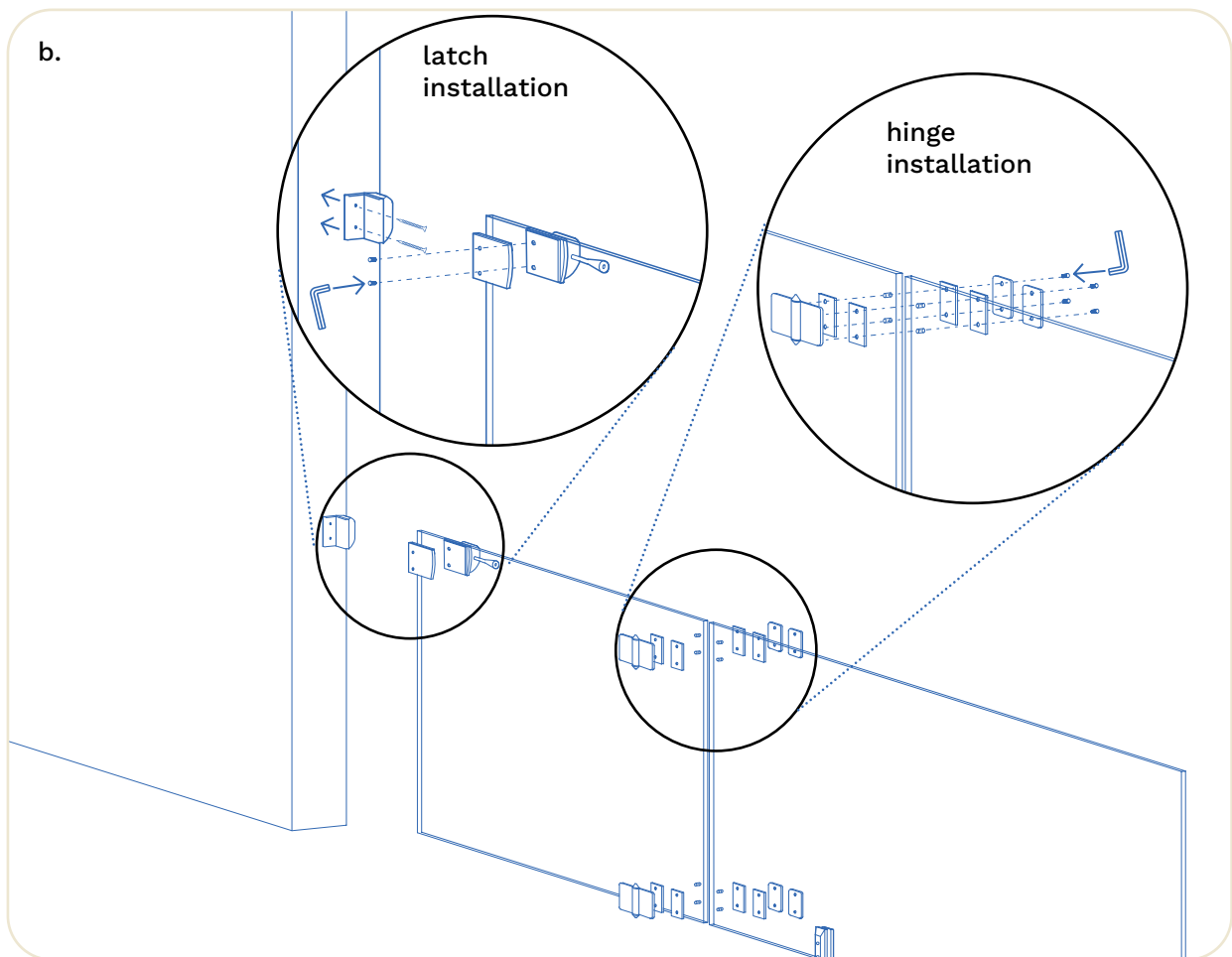
**8/B CORNER DOOR CONFIGURATION  
(WALL/POST TO GLASS)**

a. The dimension of the door opening should be 36".

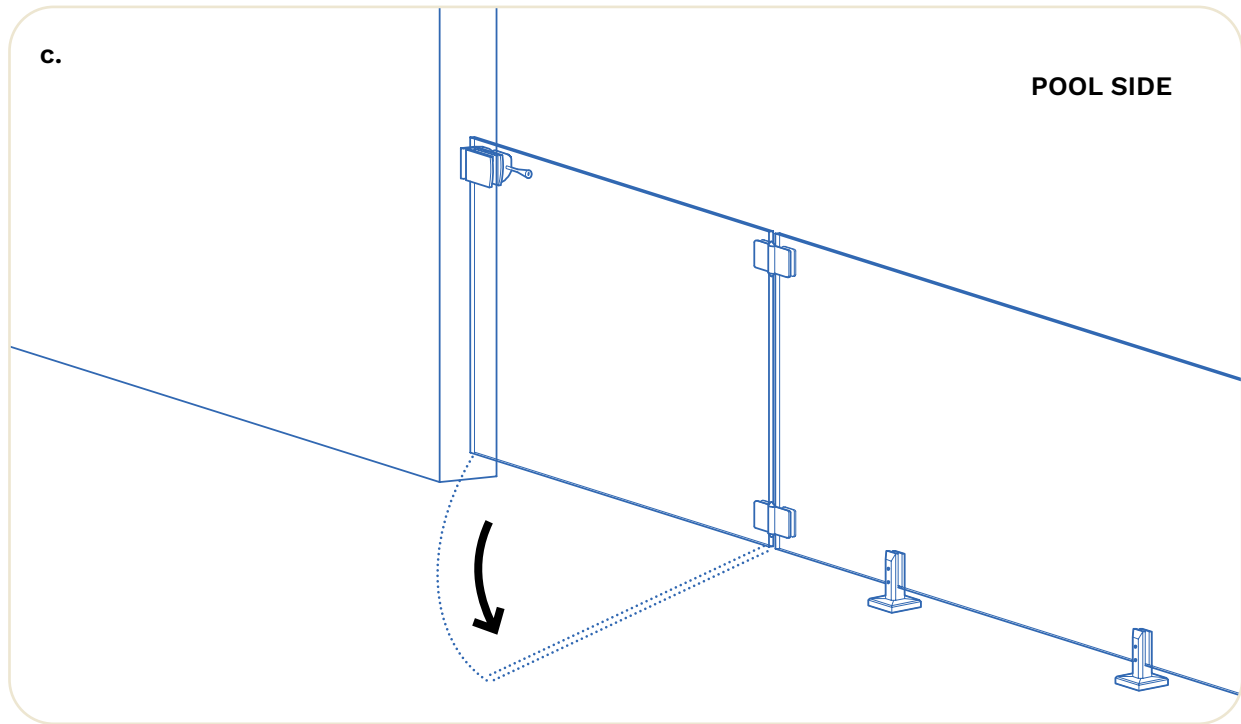


b. Install the two spring loaded door hinges and the magnetic door latch as illustrated below.

 Tip: Adjust the door closing speed with the allen key adjustment screws located on the cylindrical part of the spring loaded hinges.

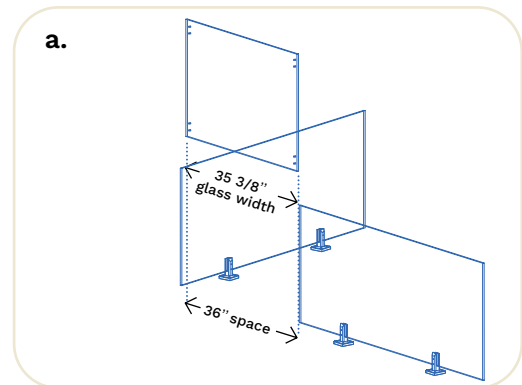
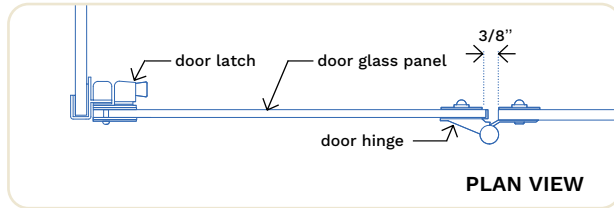


**c.** For Pool Railing, the door latch should be installed on the pool side of the gate. The door must swing outward, away from the swimming pool.




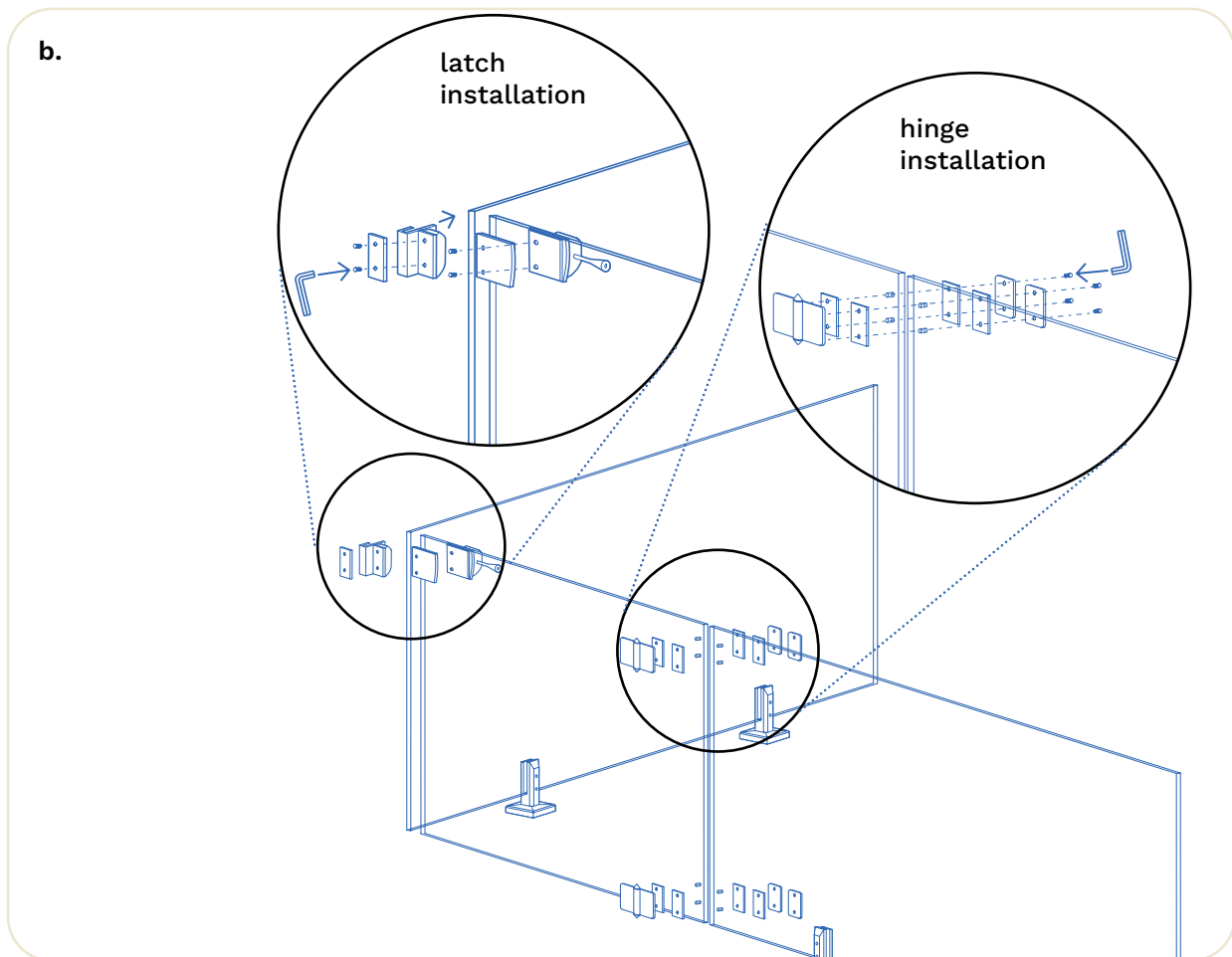
**8/C CORNER DOOR CONFIGURATION  
(GLASS TO GLASS)**

a. The dimension of the door opening should be 36".

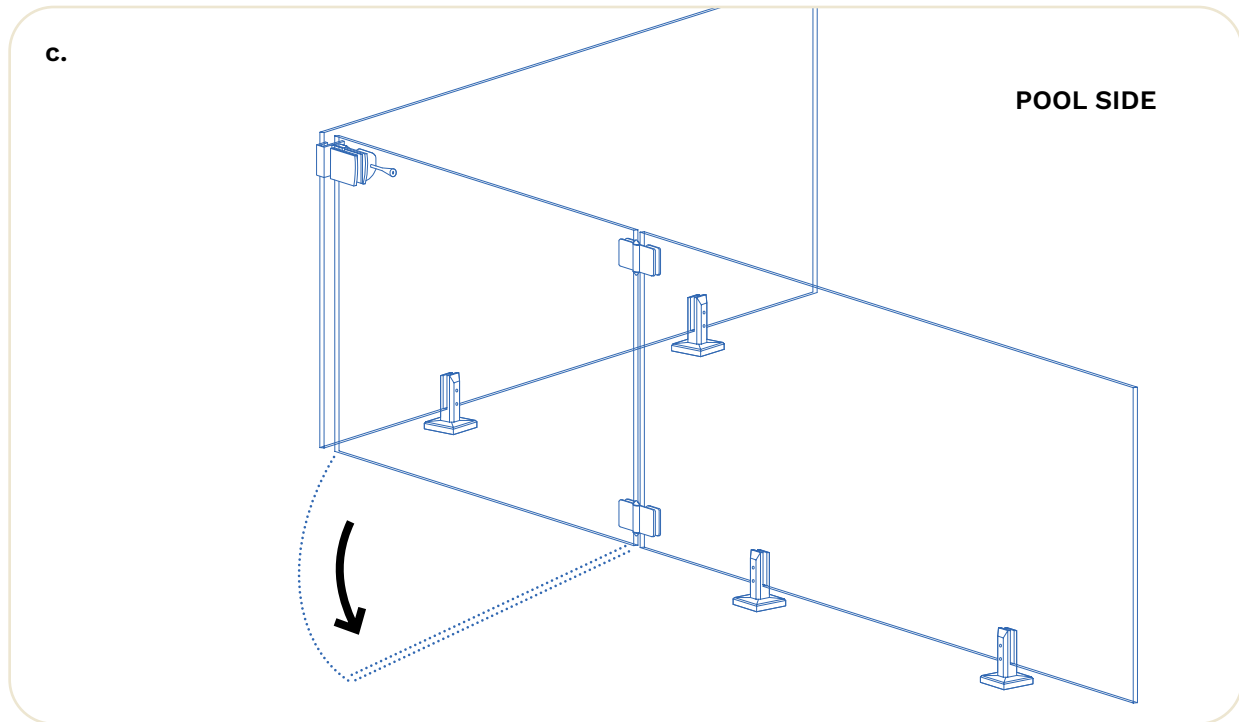


b. Install the two spring loaded door hinges and the magnetic door latch as illustrated below.

 **Tip:** Adjust the door closing speed with the allen key adjustment screws located on the cylindrical part of the spring loaded hinges.



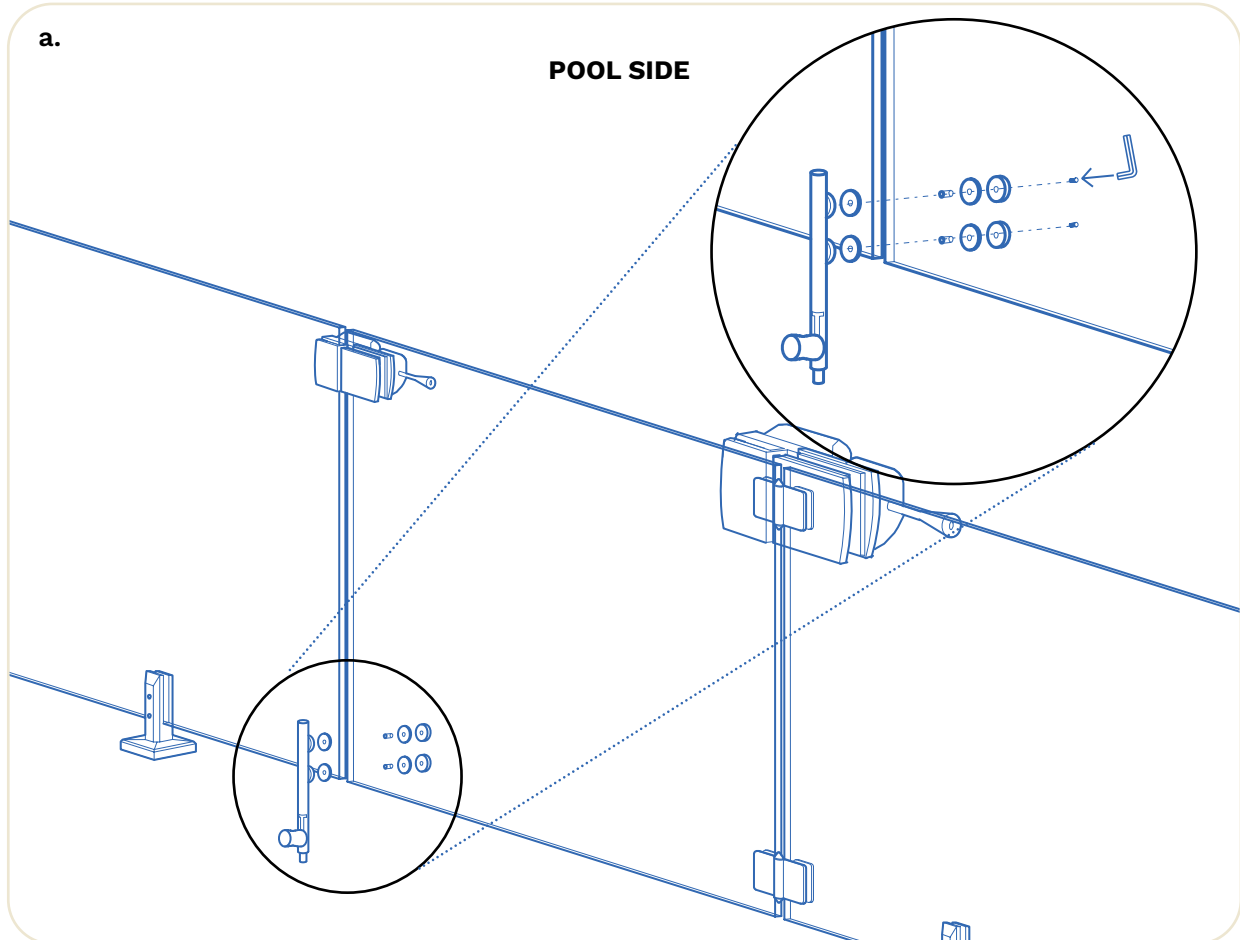
- c.** For Pool Railing, the door latch should be installed on the pool side of the gate. The door must swing outward, away from the swimming pool.



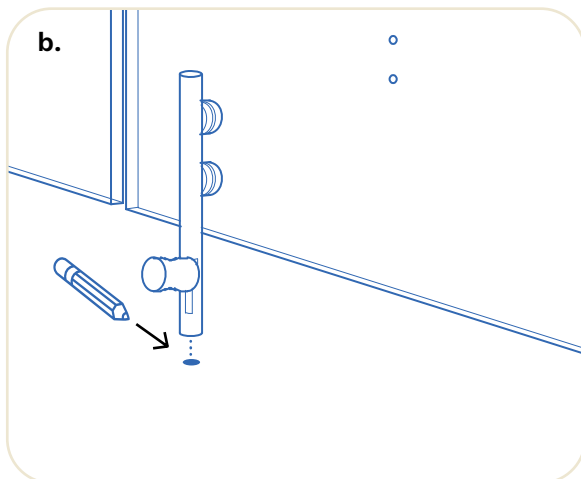


## 9 DOOR LOCK INSTALLATION

**a.** Install the door lock on the exterior (non pool) side using an Allen key as the diagram below.



**b.** Close the door in place and mark the location of the center of the lock's cylinder.



**c.** Drill a 5/8" diameter hole of 3/8" deep on the mark you have done in step b.

